

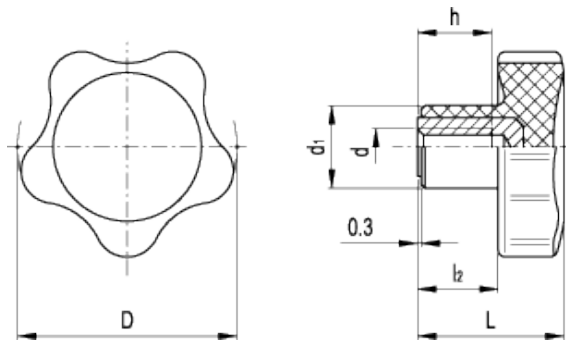
VC.692-CLEAN



Lobe knobs



ELESA Original design



technical informations

Material

Glass-fibre reinforced polyamide based (PA) technopolymer. Resistant to solvents, oils, greases and other chemical agents.

Colour

White similar to RAL 9002, matte finish.

Assembly

AISI 303 stainless steel boss, tapped blind hole.

Features and applications

The exclusive five-lobe shape (ELESA original design) offers the operator's fingers a proper grip and prevents unhealthy residues from depositing thanks to its solid shape without cavities.

This knob, thanks to its white colour, is particularly suitable for applications on medical and hospital equipment and on food processing machines whose parts, for hygienic reasons, must be frequently cleaned.

The metal insert in AISI 303 stainless steel can be used in sectors where corrosion resistant materials are required.

Standard Elements		Main dimensions				Mounting hole		Weight
Code	Description	D	L	d ₁	l ₂	d _{6H}	h	g

151702	VC.692/32-SST-M6-CLEAN	32	22.5	14	12.5	M6	10	15
151712	VC.692/40-SST-M8-CLEAN	40	26	15	14	M8	13	24
151722	VC.692/50-SST-M10-CLEAN	50	31	18	17	M10	17	42
151732	VC.692/60-SST-M12-CLEAN	60	36.5	21	21	M12	20	54



ELESA and GANTER models all rights reserved in accordance with the law. Always mention the source when reproducing our drawings.

STANDARD MACHINE ELEMENTS WORLDWIDE